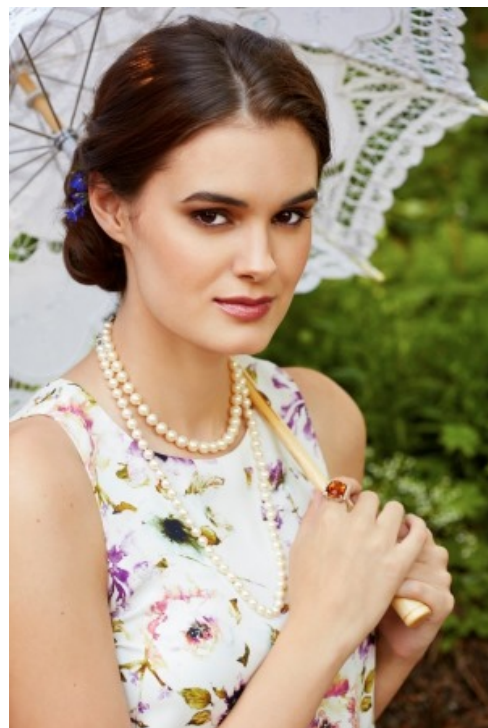


Vintage Necklace with Akoya Pearls, NK-3521

This Vintage necklace with Akoya pearls would have made Audrey Hepburn swoon. A floral engraved clasp gives this string of classic pearls a hint of dainty femininity. A small Akoya pearl is nestled in the center of the metallic flower. Fifty-eight larger Akoya saltwater pearls hug the neckline, giving a creamy luster to this necklace and the skin. Details: Vintage. Circa 1950 or later. 80% silver clasp. Akoya pearls.



Item #	nk3521
Circa	1950 or after
Number of pearls	58
Pearl shape	round
Pearl size	6.47 to 6.96
Pearl color	silver white
Pearl overtone	rose and green
Other pearl info	These Akoya saltwater pearls exhibit fair roundness, thick nacre, high bright luster, good matching, and a slightly blemished complexion.
Necklace length	460 mm [17.94 in]
Clasp details	barrel clasp of 80% silver with an engraved design; the clasp measures 13x6.4x3.0 mm and is set with one 3.75 mm pearl with comparable quality

Important Jewelry Information

Each antique and vintage jewelry piece is sent off site to be evaluated by an appraiser who is not a Topazery employee and who has earned the GIA Graduate Gemologist diploma as well as the title of AGS Certified Gemologist Appraiser. The gemologist/appraiser's report is included on the Detail Page for each jewelry piece.

An appraisal is not included with your purchase but we are pleased to provide one upon request at the time of purchase and for an additional fee. The appraiser bases the value for the jewelry on the range of prices prevailing in the most common and appropriate retail markets on the date the appraisal is completed.

Diamonds, pearls and colored gemstones are graded by the grading standards as taught by the Gemological Institute of America (GIA). All measurements and carat weights are approximate, unless otherwise noted, and are determined without removing the stones from the mounting.

The process of determining when a jewelry piece is made and the period it belongs to is not an exact science. The determination is based on design, materials, hallmarks, signatures, and the manufacturing method. Circa dates and period assignments are made to the best of our abilities.

All pearls are cultured unless noted as natural. All gemstones have been treated by accepted industry standards unless noted otherwise.

Platinum refers to all metals in the platinum family and the alloys which are mixed with it -- palladium, platinum/iridium, and platinum/ruthenium and platinum/cobalt. A non-destructive acid scratch test is used to verify the metal in each jewelry piece. A refractometer is used to test gemstones.

Computer monitors show colors differently; please keep in mind that the actual colors in a jewelry piece may be different from the colors displayed in the website photos.

Jewelry photographs are enlarged to show details. To help you determine if a jewelry piece is appropriate in terms of actual proportions that suit your style as well as the statement you want to make, we provide detailed measurements of the piece.

Rings are photographed on a mannequin's hand in a glove size 6. Rings in sizes from 5.0 or smaller are photographed on a mannequin's hand in a glove size of 5.0.

Each antique and vintage jewelry piece has been pre-owned and expertly restored unless otherwise noted under "Condition".

For special ring orders as well as antique style and vintage inspired rings which are new, the diamond and gemstone carat weight, color, clarity, gram weight, as well as other jewelry details may vary from the website specifications.

©Copyright 2001 - 2024

Topazery, LLC

Atlanta, GA, USA

®Topazery is a Registered Trademark